

LAYOUT PAGE TABLE			
LABEL	TITLE	DESCRIPTION	COMMENTS
P-1	PROJECT OVERVIEW		



2nd Floor

1st Floor



VIEW ALL IMAGES

**GALLERY**

DOWNLOAD IMAGES

**ZIP FILE**

CLICK HERE FOR

**DWG FILE**

CLICK HERE FOR

**DWG FILE**  
with datapoints

CLICK HERE FOR

**DWG FILE**  
ceiling plan



REVISION TABLE	
NUMBER	DATE

DOC #: 110901\_08

CARMEN PLAZA  
UNIT 08

GaelCom, Inc.  
4220 Itchenockeassa Blvd.,  
Lakeland, FL 33810  
Tel: (224) GAELCOM

DATE:

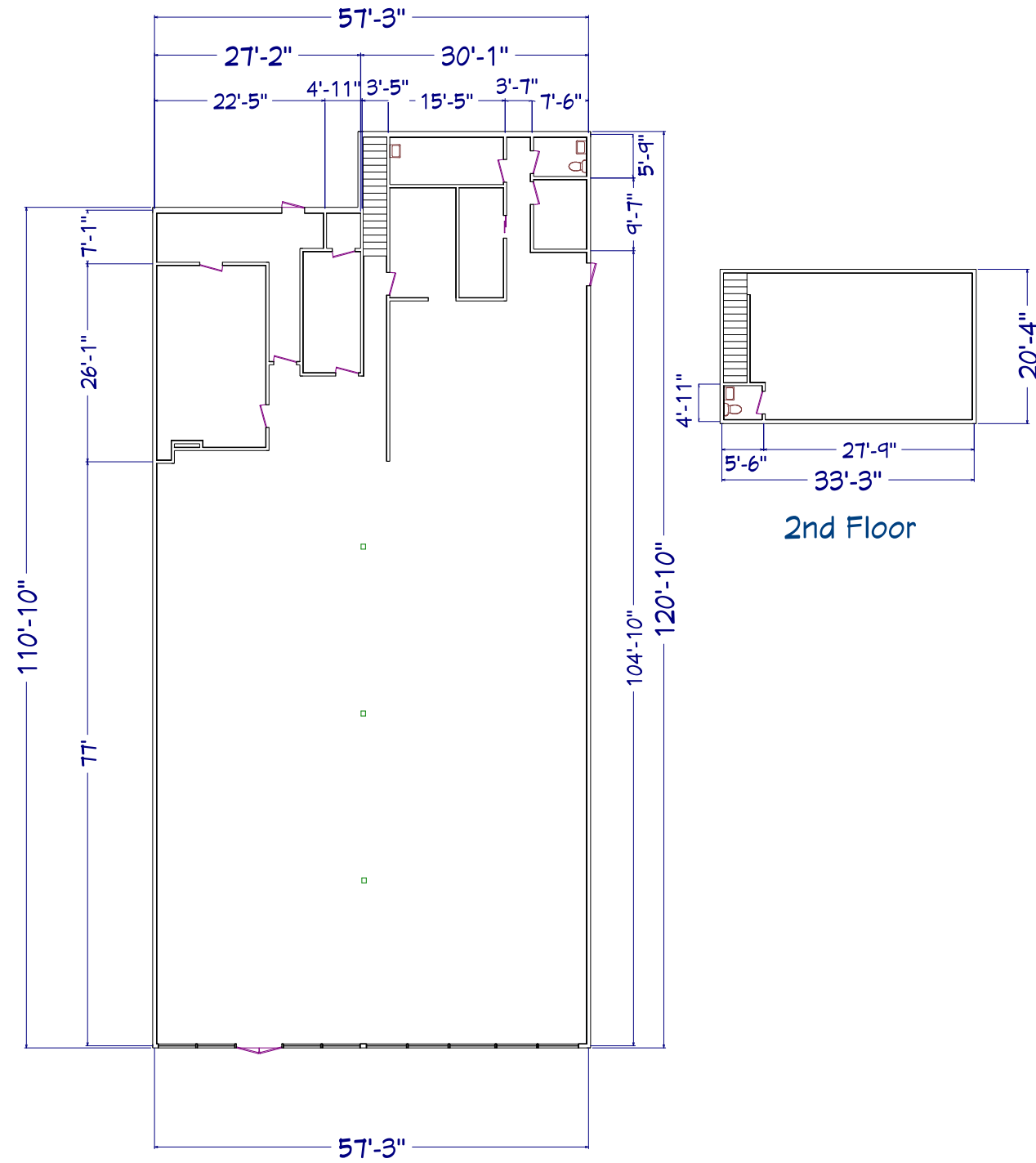
5/30/2019

SQ. FT.

6625

SHEET:

P-1



REVISION TABLE	
NUMBER	DATE

DOC #: 110901\_08

CARMEN PLAZA  
UNIT 08

GaelCom, Inc.  
4220 Itchenockeassa Blvd.,  
Lakeland, FL 33810  
Tel: (224) GAELCOM

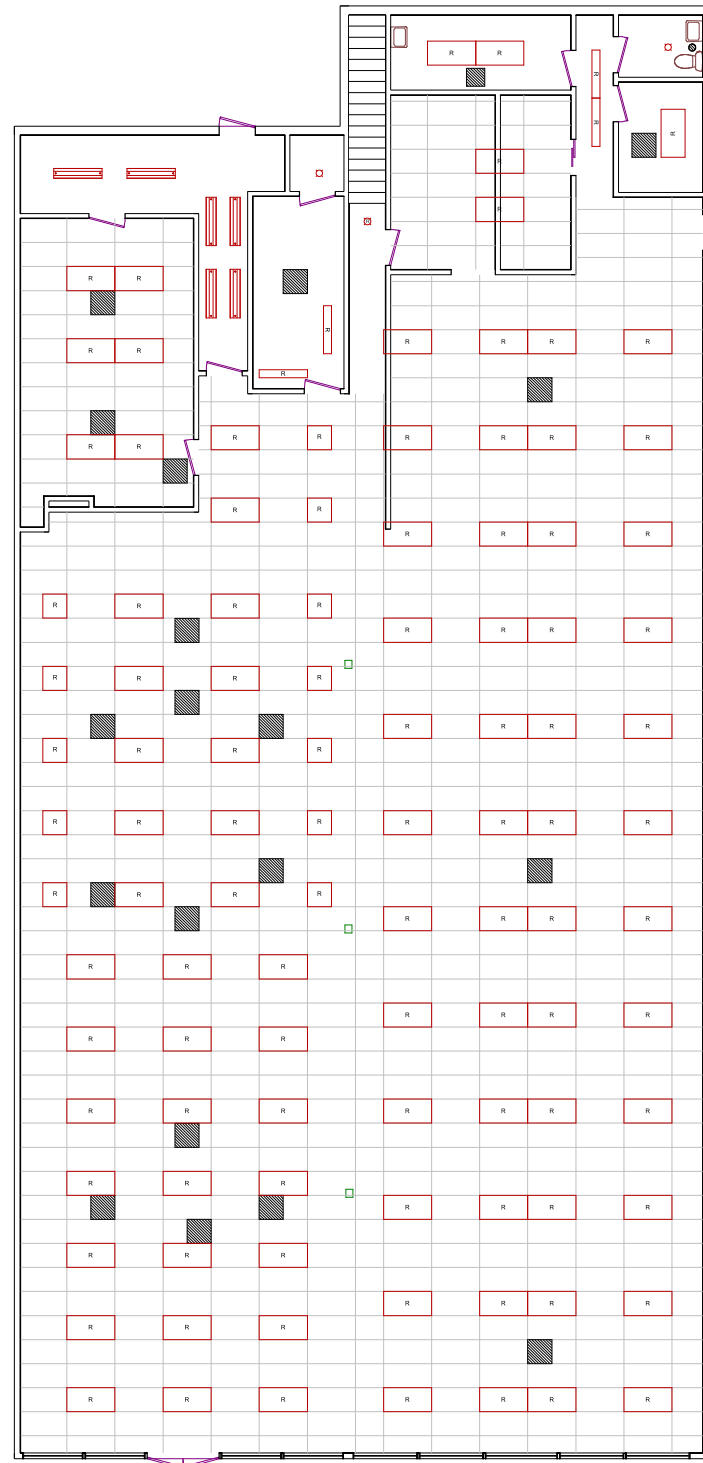
DATE:

5/30/2019

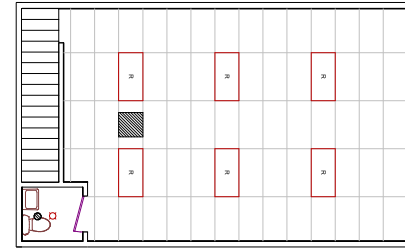
SQ. FT.

6625

SHEET:



1st Floor



2nd Floor



REVISION TABLE	
NUMBER	DATE

DOC #: 110901\_08

CARMEN PLAZA  
UNIT 08

GaelCom, Inc.  
4320 Itchenockeassa Blvd.,  
Lakeland, FL 33810  
Tel: (224) GAELCOM

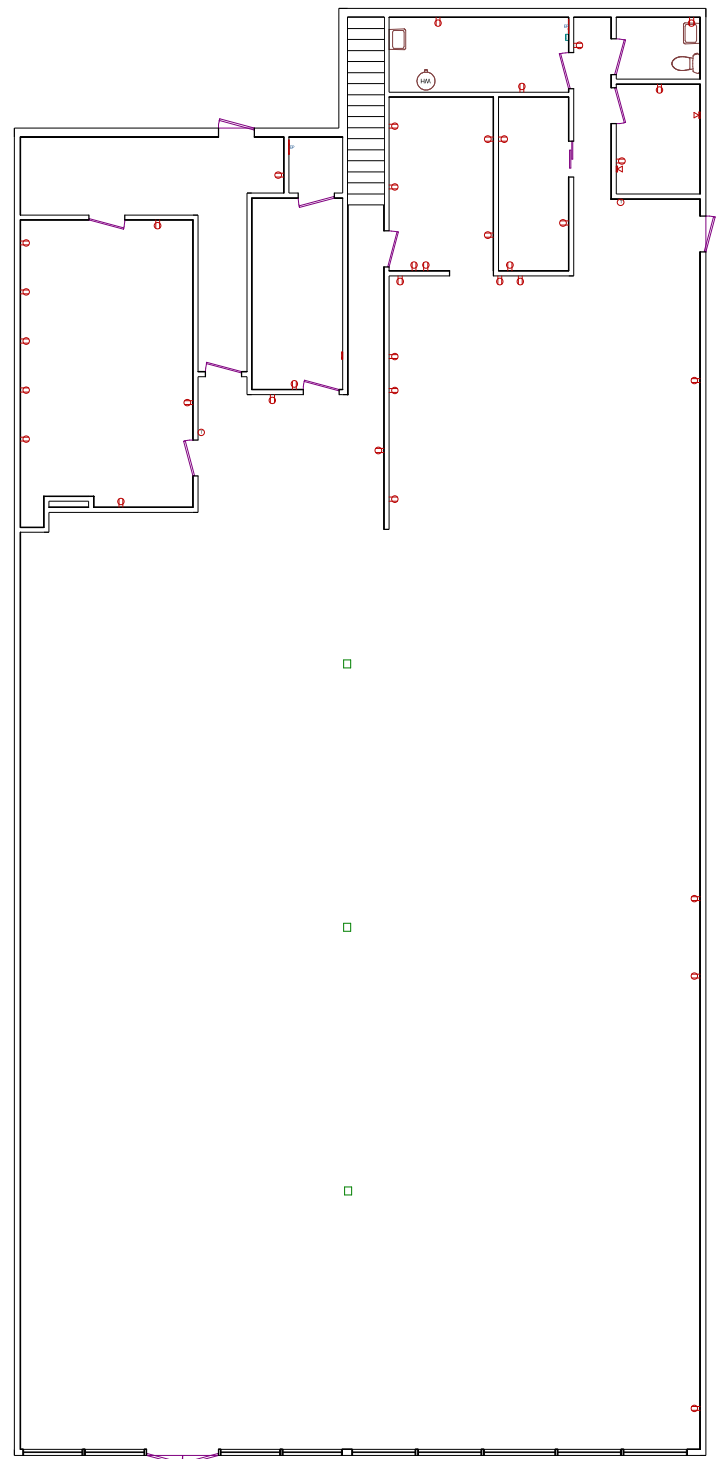
DATE:

5/30/2019

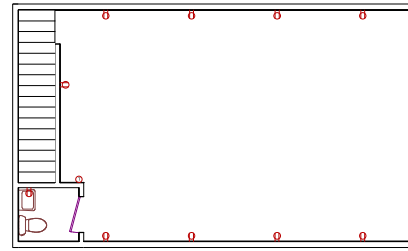
SQ. FT.

6625

SHEET:



1st Floor



2nd Floor



REVISION TABLE	
NUMBER	DATE

DOC #: 110901\_08

CARMEN PLAZA  
UNIT 08

GaelCom, Inc.  
4220 Itchenockeassa Blvd.,  
Lakeland, FL 33810  
Tel: (224) GAELCOM

DATE:

5/30/2019

SQ. FT.

6625

SHEET:



REVISION TABLE	
NUMBER	DATE

DOC #: 110901\_08

CARMEN PLAZA  
UNIT 08

GaelCom, Inc.  
4220 Itchenockeassa Blvd.,  
Lakeland, FL 33810  
Tel: (224) GAELCOM

DATE:

5/30/2019

SQ. FT.

6625

SHEET:

- CEILING FAN
- CEILING LIGHT
- DECORATIVE LIGHT
- DRAIN
- DRINKING FOUNTAIN
- ELECTRIC METER
- ELECTRIC OUTLET 110V
- ELECTRIC OUTLET 220V
- ELECTRICAL PANEL
- EMERGENCY LIGHT
- EXIT SIGN
- FIRE EXTINGUISHER
- FIRE LIGHT
- RECESSED FLUORESCENT 24x24
- RECESSED FLUORESCENT 24x48
- GAS METER
- SINK
- INCANDESCENT LIGHT OR BULB
- MOTION SENSOR
- PENDANT LIGHT
- RECESSED SPOT OR FLOOD
- SECURITY SYSTEM KEYPAD
- SHOP LIGHT
- SMOKE DETECTOR
- SPOTLIGHT (SINGLE)
- FIRE SPRINKLER
- TELEPHONE OR DATA POINT(S)
- TIMER
- THERMOSTAT
- TOILET
- TRACK LIGHTING
- URINAL
- WALL LIGHT
- WATER HEATER
- WATER METER

GENERAL UNIT INFORMATION		
Height to ceiling	9'11"	ft
Height to joist	12'7"	ft
Height to roof	13'9"	ft
Panel 1 Load	unknown	Amps
Panel 2 Load	225	Amps
Panel 3 Load	n/a	Amps
Column 1 dim.	7"x8"	in
Column 2 dim.	7"x8"	in
Column 3 dim.	7"x8"	in
Sales Floor	concrete	type
Other Floor	wood	type
Other Floor	carpet	
Sprinklers	no	yes
Loading Dock	no	yes

**UNIT NOTES:**

1. House Panel 1 Capacity not marked and no main breaker was evident.
2. No electric meters found near by.
3. No gas meters found near by.
4. No water meters found near by.
- 5.
- 6.

**GENERAL COMMENTS:**

1. These schematic layouts are for representative purposes and do not preclude the requirement for architectural drawings and verification prior to internal layout and design.
2. All internal measurements were taken with Bosch GLM 40X Laser Measurer or Equivalent.
3. All internal measurements in drawing are Face to Face consistent with actual field recordings.
4. Measurements, Ceiling Heights, and pillar placements are accurate to nearest half inch.

1st Floor